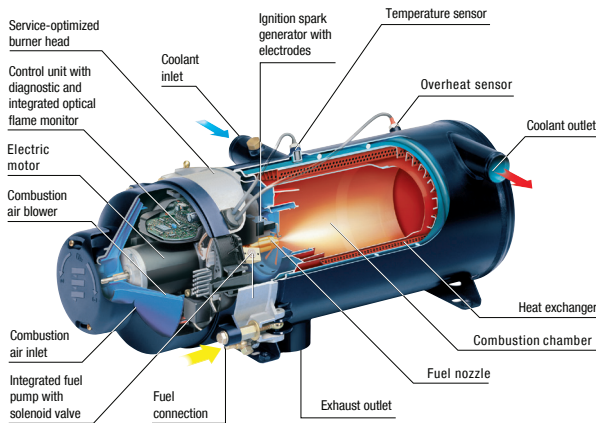




HYDRONIC L-II TECHNICAL DATA



HYDRONIC L-II COOLANT HEATER

Eberspaecher's Hydronic L-II series are for the largest coaches, boats, and off-road engines. These heaters provide engine, fuel, and hydraulic preheat and can be incorporated into a coach's heating system to provide supplemental heat. They're the first choice for rapid heating in "arctic-like" conditions.



HYDRONIC 16



HYDRONIC 24



HYDRONIC 30



HYDRONIC 35

COOLANT HEATERS

	HYDRONIC 16	HYDRONIC 24	HYDRONIC 30	HYDRONIC 35
Heat Output (kW/BTU)	16 / 54630	24 / 87950	30 / 102430	35 / 120000
Fuel Consumption (l/hr / US gal/hr)	2.0 / 0.53	2.9 / 0.77	3.7 / 0.98	4.2 / 1.11
Electrical Consumption (amps)				
*24V only without coolant pump	2.50	3.33	4.38	5.00
12V converter available				
Weight (kg/lbs)	18.14 / 40	18.14 / 40	18.14 / 40	18.14 / 40
Water Throughput	5200 l/hr against 0.2 bar 1374 US gal/hr against 3 psi			